

- In addition to routine checks for each use, PPE should regularly undergo a detailed inspection by a competent person. Petzl recommends an inspection every 12 months and after any exceptional event in the life of the product.
 - PPE inspection should be conducted with the manufacturer's Instructions for Use.
- Download the instructions at PETZL.COM.

ICE AXES



1. Known product history

Any PPE showing unexpected degradation should be quarantined, pending a detailed inspection.

The user should:

- Provide precise information on the usage conditions.
- Report any exceptional event regarding his PPE.
(Examples: fall or fall arrest, use or storage at extreme temperatures, modification outside manufacturer's facilities...).

2. Preliminary observations

Verify the presence and legibility of the serial number and the CE mark.

Note: the serial number code on our products is evolving. Two types of code will coexist. See below for details on each serial number code.

Code A:

00 000 AA 0000

Year of manufacture
Day of manufacture
Name of Inspector
Incrementation

Code B:

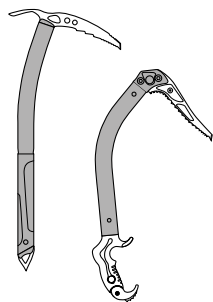
00 A 0000000 000

Year of manufacture
Month of manufacture
Batch number
Incrementation

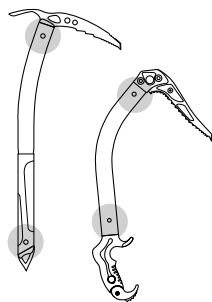
Verify that the product lifetime has not been exceeded.

Compare with a new product to verify there are no modifications or missing parts.

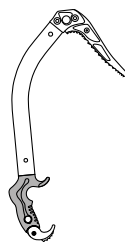
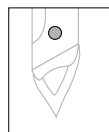
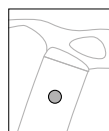
3. Checking the condition of the shaft



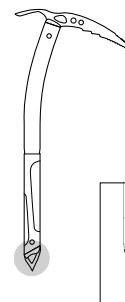
- Check the condition of the shaft (marks, deformation, cracks...).



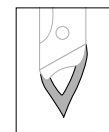
- Check the presence and condition of the rivets (marks, deformation, cracks, corrosion, absence of play...).



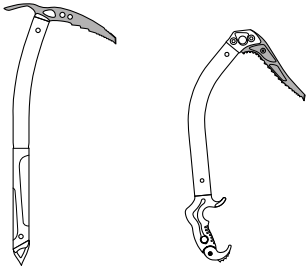
- Check the condition of the grip (marks, deformation, cracks, wear...).



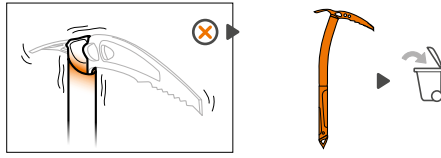
- Check the condition of the spike (marks, deformation, cracks...).



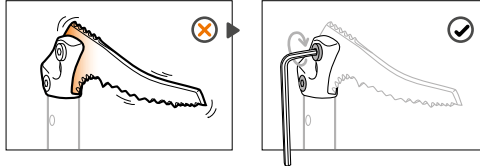
4. Checking the condition of the ice axe head



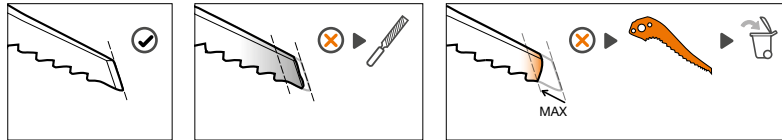
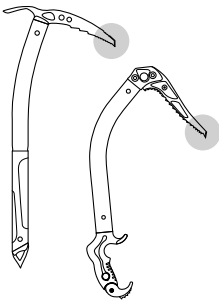
- Check the condition of the pick (marks, deformation, cracks, corrosion, absence of play...).
- If the pick is rusted, scrub it with an abrasive sponge.



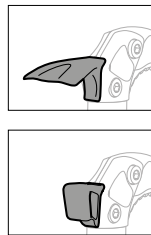
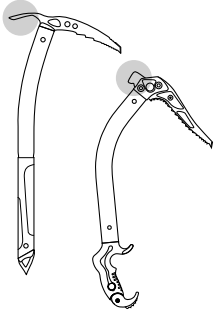
- Verify the absence of play at the head/shaft junction.



- Verify proper screw tightness at the ice axe head (pick, weights, adze, hammer).

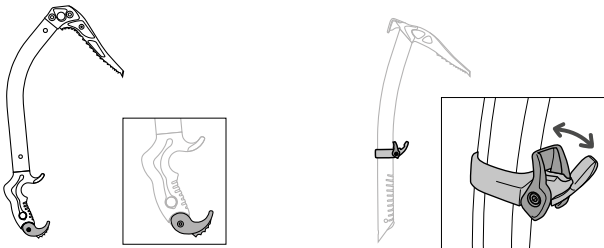


- Check the condition of the teeth and tip of the pick. If necessary, sharpen the points with a suitable tool. Do not go beyond the first tooth.



- Check the condition of the adze and/or hammer if present (deformation, marks, wear...).

5. Inspection of GRIPREST and/or TRIGREST if present



- Check the condition of the GRIPREST and/or TRIGREST (marks, deformation, cracks...).

- A small amount of play is acceptable for the GRIPREST.

- Verify that the TRIGREST locks properly.

6. Appendix: examples of ice axes that are worn, or that should be retired

- Crack in shaft



- Worn ice axe



- Worn head



- Rusted pick



- Rusted pick



- Damaged finish

